

Grants Managers Network 2012 Annual Report

Framework for Success

You can hear it in our members' stories and see it in GMN's reputation and relationships: Grants Managers Network is a successful and vital membership organization. Over the last 20 years, the network has achieved more than anyone could have predicted. We've grown from two grants managers in a coffee shop to more than 2,400 philanthropy professionals across the nation and even around the world.

The milestones we marked ahead of 2012 were the perfect catalysts for new thinking about the way GMN has evolved and what the future might hold.



[Read the 2012 Strategic Framework on GMN's website »](#)

WHERE DO WE GO FROM HERE?

To help guide that thinking, GMN's Board of Directors worked to develop a strategy that goes beyond the ideas and plans of a single year or even a number of years. The result of their work—GMN's Strategic Framework—represents a new way of looking at our goals, progress, and planning. The framework establishes a broader and deeper set of intentions for the organization in a format that allows and encourages flexibility to capitalize on new situations and opportunities.

Looking further into the future enables GMN to anticipate and proactively meet members' changing needs. And member feedback confirms that GMN is an important factor in the professional development of grants management professionals.

2011 marked the 20th anniversary of the first meeting between Ann Gael and Margaret Egan, GMN's founders, and the group that became Grants Managers Network, as well as the 15th anniversary of GMN's expansion to a national organization. It was a year for celebration and reflection, as well as the perfect time to look ahead, to the future of grantmaking and Grants Managers Network.

In 2012, we used these building blocks of GMN to look forward.

Grants Managers Network Staff

Michelle Greanias
Executive Director
mgreanias@gmnetwork.org
202-329-7670

Miriam Hankins, MBA
Manager, Membership and Chapter Services
mhankins@gmnetwork.org
202-296-2489

Nikki Powell
Communications Manager
npowell@gmnetwork.org
202-495-0419

Dee Wright
Administrative Associate
dwright@gmnetwork.org
202-296-2640

Grants Managers Network

1666 K Street, NW Suite 440
Washington, D.C. 20006
P (888) GMN-1996
F (888) 446-9370
info@gmnetwork.org

Building on the Framework

It is my pleasure to share with you the achievements of Grants Managers Network in 2012, and the stories of the people who made those successes possible.

GMN members are some of the most passionate, curious, and generous people I know. There is a culture of sharing and inclusion that makes this network very special. GMN's primary goal will always be to embrace the people and personalities that make up this one-of-a-kind organization.

To better serve our members and expand GMN's contributions in the field of grantmaking, we have focused on four significant areas of work: expanding learning programs; promoting effective practices; engaging members; and strengthening the organization. This report highlights just a fraction of the work we are doing every day to bring depth and meaning to membership in GMN.

In order to provide better service, we have increased our staff capacity, adding critical expertise and expanding resources for member outreach. In 2012, GMN added a communications manager and administrative associate.

Using the strategic framework developed by the GMN Board of Directors, we are striving hard to continue delivering the exceptional resources, tools, knowledge, and connections that our members deserve. Throughout this report you will see those efforts in action and read stories of members who remain the central focus of this network.

I hope you will share your story, too.

Visit www.gmnetwork.org/gmnstories to tell us how GMN has made a difference in your career, introduced you to lifelong friends, or helped you build a strategic framework for your own future.

I am proud of what we have accomplished in 2012 and excited about what the future holds for Grants Managers Network. Your continued support can help us achieve our goals and more. [See GMN's 2013 Strategic Framework goals »](#)



Michelle Greanias
GMN Executive Director
21 years in field
17 years as GMN member

Although the numbers tell only half the story, looking at the growth of GMN through membership, engagement, and organizational support confirms that the network continues to be a vital component of professional development and knowledge sharing for grants management professionals.

By the Numbers

449 attendees at 2012 GMN Conference

60 participants in inaugural
Grants Management 101 Workshop

4 new sections of GM Guide

7 interactive webinars

*17 percent of members participated in a
GMN educational webinar*

700 responses to Project Streamline
assessment survey

1,300 unique visitors to first
GMNsight: Advancing Grantmaking journal

800 downloads of IT survey

44 regional chapter meetings

*95 percent of regional meeting attendees
report that educational topics are relevant
to their work*

25 percent increase in membership

142 members engaged via
member orientation webinars

554 members targeted by
New Member Touch Point Campaign

16 different engagement activities combined to
measure member engagement

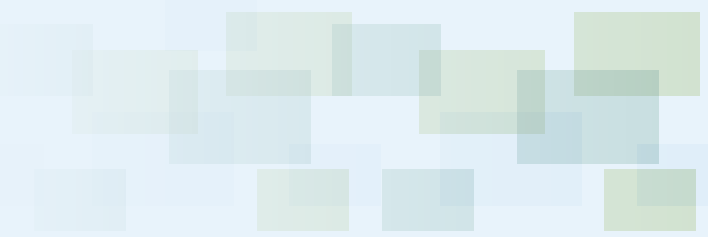
*78 percent of volunteers report developing
or enhancing skills that improve their
job performance and effectiveness*

3,000+ receive
GMN Examiner newsletter

15 percent increase in income

70 new funders

263 Contributing Organization Members



Expanding Learning Programs

To develop the knowledge, skills, and abilities of grants management professionals, GMN continues to deliver quality learning opportunities to members through the annual conference, regional meetings, webinars, the online community, and GMN publications. We also continue to build out the profession's body of knowledge and plan for the future of GMN's learning programs.

In 2012, we asked a cross-section of our members to help us determine the specific types and pieces of knowledge are most important to grants management professionals based on their time in the field, type of grantmaking institution, and professional development opportunities.

In parallel with this assessment of learning needs, GMN took an in-depth look at our existing suite of resources, tools, and educational offerings.

The result of this work is a strategy for aligning, improving, and expanding education programs to better meet member needs and interests. This plan will be created in 2013 for implementation in 2014 and beyond.

2012 Highlights

- The launch of GMN's new Texas Regional Chapter expanded our reach to 14 regional chapters across the U.S. and surrounding territories.
- GMN's regional chapters held 44 meetings in 2012.
- GMN's active online community continues to serve as a sounding board, advice column, brainstorming hub, and discussion tool. In 2012, about 50 percent of members accessed the community, and many posted or participated in discussions—at least one new discussion is posted each business day and more than 80 percent of new discussions received replies.
- GMN held seven webinars in 2012 on a wide variety of topics: How to Make Webinars Work for You; Electronic Record Keeping; How to Prepare for an Audit; Advocacy Grantmaking; Board Books Online; Cloud Computing; and Grantee Financial Tools. Participation for GMN webinars averages 80 members per webinar and all webinars are recorded and made available to members on an ongoing basis.

The people in this network taught me how to do my job. When I first entered philanthropy, there was no one showing me how to be a grants manager. A two-person office can be very isolating. GMN opened up a world of knowledge and mentors that have helped me learn how to do this work and improve our grantmaking process.

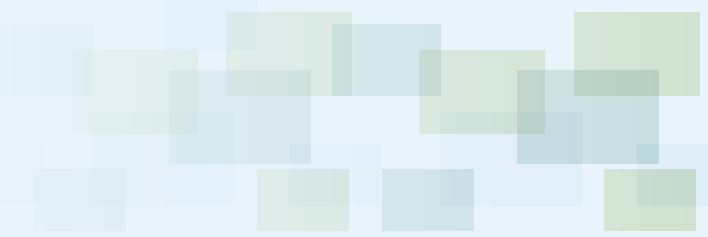
Danielle Gray

Grants Manager

R. Howard Dobbs, Jr. Foundation

5 years in field

5 years as GMN member



“ I was lucky enough to participate in the 2012 pre-conference workshop and can't say enough about how important the whole day was to my work then and now. With so much to learn as part of Grants Management 101, the success of the pre-conference day really hinged on the session presenters: grants management and philanthropy professionals who have the best first-hand knowledge to share with those new to the field. My experience at the GMN pre-conference workshop was truly exceptional. ”

Victor Gongora
Project Associate
Greater Texas Foundation

3 years in field
1 year as GMN member

An Annual Conference That Matters

GMN's annual conference is an integral part of our overall learning program and continues to grow in size and scope. Our 2012 conference in San Antonio drew nearly 450 participants.

Building a Foundation of Knowledge

New to GMN's 2012 conference was an innovative pre-conference workshop—Grants Management 101—targeted at professionals who were new to grants management. The day-long intensive learning workshop included an introduction to basic concepts and skills that our members tell us are key to growing in the profession.

Experienced grants managers led 60 participants through topics such as planning and designing the proposal process, grantmaking compliance and best practices, and reading and understanding financial statements.

100 percent of pre-conference participants reported that the workshop gave them a comprehensive overview of grants management and met their needs as a new grants manager.

2012 Highlights

In a post-conference survey:

- 99 percent of respondents indicated that they were satisfied or very satisfied with the conference overall.
- 97 percent reported that the conference gave them concrete tools and resources to apply in their work.
- 65 percent indicated they will definitely make a change to their grantmaking as a result of the conference (with another 31 percent reported they may make changes)
- 91 percent reported that they are likely to attend a future GMN conference.

[Read more about GMN's annual conference and access session summaries from 2012 and 2013 »](#)



Promoting Effective Practices

GMN has significantly improved grantmaking by working to promote effective practices that streamline application and reporting processes, alleviate administrative burdens, and free up more time and money for mission-based activities.

praised the caliber of content and design. GMN delivered the journal to more than 4,200 contacts and more than 1,300 unique visitors have accessed the journal on our website since its debut.

[Join the GMNsight mailing list »](#)

Taking Stock of Project Streamline

In 2012, GMN began the work of assessing our signature project: Project Streamline. We asked grantmakers and grantseekers to weigh in on how Project Streamline has taken hold and improved grantmaking. The results of hundreds of surveys, interviews, advisory group discussions, and additional research will be published in May 2013 at www.projectstreamline.org/takingstock.

[Join the Project Streamline mailing list »](#)

Creating and Sharing Insight

GMN launched a new professional journal, GMNsight: Advancing Grantmaking. The first edition, with the theme “*Brave New World of Grants Management*” was published in August 2012 to overwhelmingly positive response. GMN members, colleagues in the field, and even internationally-known Alliance Magazine have

2012 Highlights

- GMN partnered with the Technology Affinity Group in 2012 to develop a new edition of TAG’s popular *information technology survey*. This report targeting grantmakers shared details, trends and insights into the technology resources and tools used by peer organizations. The technology report was read by more than 800 GMN members, making it one of our most read publications of the year.
- Four new sections were added to the GM Guide in 2012—Grantmaker Types, Operating Grants, Cash/Grant Payments Forecasting, and IRS Tax Status Classification. The GM Guide remains the field’s only source of comprehensive grants management information and is used as the foundation for learning programs within GMN, including our GM 101 pre-conference workshop, where attendees are introduced to the guide and the wealth of knowledge it contains.

“GMN’s members share a common responsibility of being stewards of their organizations processes and investments. We measure our success not only by what we fund, but by the process by which we fund it. By gathering the best options available and sharing, GMN helps us better serve our communities.”

Dolores Estrada
The California Endowment

14 years in field
9 years as GMN member

[Read more about how Dolores and The California Endowment are leading the way in effective practices »](#)



Engaging Members

GMN's membership has grown faster than anyone could have hoped or would have predicted, all based on word-of-mouth and referrals by current members who find substantial value in their engagement in GMN.

In 2012, GMN membership increased by 25 percent.

Ensuring a Warm Welcome

When grants professionals take the step to join GMN, we want them to immediately begin receiving the benefits of belonging.

One of the ways GMN welcomes new members is through our ongoing GMN Member Orientation Webinar series, offered every other month and targeted at our newest members. The orientation webinar helps clarify what GMN is and what we have to offer, and provides new members with ideas on how to begin taking advantage of these resources. In 2012, the webinar series members engaged 142 new members.

In addition, the New Member Touch Point Campaign helps guide new members—554 of them in 2012—through their first year of engagement with GMN, offering tools, trainings, and tips that help actively

engage and offer practical benefits. These touch points at the beginning of membership help new members find their way and ensure a higher level of active engagement.

Engaging the Data

Throughout 2012, we made a number of additions and improvements to the GMN member database in order to help track member engagement and better understand member needs. The improvements include a new way to measure engagement based on 16 different data points. The results will be used to support the development and planning efforts for GMN's learning strategy, which includes long-term efforts to provide members with expanded educational programs.

2012 Highlights

- 94 percent of GMN's volunteers are moderately to highly engaged within the organization.
- 20 percent of GMN members attended at least one or more regional meetings in 2012.

As of December 31, 2012, GMN's membership included 2,454 grants professionals.

“ Collaboration drives the tremendous impact of GMN's community. At GMN, everyone wants everyone else to be successful. Members aren't just randomly putting information out into the world; we're populating spaces like the online community that serve as a training ground, information outlet, and best practices resource. ”

Ra'mona Brown
Grants Management Assistant
The Kresge Foundation

5 years in field
2 years as GMN member

“ GMN has grown into one of the premier membership organizations in the field of philanthropy. What gives me the greatest satisfaction is the realization that GMN has helped define the profession of grants management, providing the foundation for grantmakers to benefit from the deep collective knowledge of its members, and, just as importantly, to give its members a greater sense of professional self-worth. ”

Jonathan Goldberg
Surdna Foundation

28 years in field
16 years as GMN member

Read more of Jonathan's observations as a long-time GMN member»

Board of Directors*

Kim Armstrong
Mutual of Omaha Foundation
Omaha, Neb.

Dolores Estrada
The California Endowment
Los Angeles, Calif.

Susan Fulton
Endowment for Health
Concord, N.H.
Co-chair

Roger Fuse Brown
Atlanta, Ga.

Jonathan Goldberg
Surdna Foundation
New York, N.Y.

Nancy Herzog
National Endowment for Democracy
Washington, D.C.

Melanie Matthews
Campion Foundation
Seattle, Wash.

Marcus McGrew
The Kresge Foundation
Troy, Mich.
Co-chair

Carol Miller
Greater Texas Foundation
Bryan, Texas

Ericka Novotny
Arcus Foundation
New York, N.Y.

Jennifer Pedroni
North Penn Community Health Foundation
Colmar, Penn.
Treasurer

Tiffany Price
Mitchell Kapor Foundation
San Francisco, Calif.
Secretary

Patrick Taylor
The Energy Foundation
San Francisco, Calif.

Rebecca Van Sickle
The Atlantic Philanthropies
New York, N.Y.

Cristina Yoon
The Skoll Foundation
Palo Alto, Calif.

*as of December 31, 2012

Financial Statements

<i>Statements of Financial Position</i>	2012	2011
ASSETS		
<i>Cash and cash equivalents</i>	\$609,261	\$556,660
<i>Contributions receivable</i>	\$74,138	\$36,000
<i>Prepaid expenses and deposit</i>	\$21,392	\$31,626
<i>Investments</i>	\$162,017	\$76,614
<i>Property and equipment, net</i>	\$3,204	\$2,395
Total assets	\$870,012	\$703,295
LIABILITIES		
<i>Accounts payable and accrued expense</i>	\$39,170	\$34,954
<i>Deferred conference fees</i>	\$103,305	\$60,970
Total liabilities	\$142,475	\$95,924
NET ASSETS		
<i>Unrestricted</i>	\$640,818	\$544,871
<i>Temporarily restricted</i>	\$86,719	\$62,500
Total net assets	\$727,537	\$607,371
Total liabilities and net assets	\$870,012	\$703,295

<i>Statements of Activity</i>	2012	2011
REVENUE AND SUPPORT		
<i>Grants and contributions</i>	\$754,236	\$597,920
<i>Annual conference and workshops</i>	\$369,325	\$371,200
<i>Investment income</i>	\$12,204	\$5,115
<i>Guide sales</i>	\$2,879	\$4,940
<i>Other income</i>	\$17,170	\$2,268
Total revenue and support	\$1,155,814	\$981,443
EXPENSES		
<i>Program services</i>	\$930,692	\$792,511
<i>Supporting services:</i>		
<i>Management and general</i>	\$31,851	\$35,436
<i>Fundraising</i>	\$73,105	\$55,180
<i>Total supporting services</i>	\$104,956	\$90,616
Total expenses	\$1,035,648	\$883,127
Change in Net Assets	\$120,166	\$98,316
Net Assets, <i>beginning of year</i>	\$607,371	\$509,055
Net Assets, <i>end of year</i>	\$727,537	\$607,371

As a testament to the value of belonging to GMN, more than 250 grant-making organizations offer their support as contributing organization members. In return, these organizations benefit from valuable resources and work. We are grateful to these organizations for their financial support in 2012.

Contributing Organization Members

3M	Bullitt Foundation	The Commonwealth Fund
AdminiTrust LLC	Burroughs Wellcome Fund	The Community Foundation of Santa Cruz County
Akonadi Foundation	Bush Foundation	Compton Foundation
Allegheny Franciscan Ministries, Inc.	Cal Humanities	ConAgra Foods Foundation
The Allstate Foundation	The California Endowment	Connelly Foundation
Altman Foundation	California HealthCare Foundation	Conrad N. Hilton Foundation
American Jewish World Service	The California Wellness Foundation	Consumer Health Foundation
American Savings Foundation	Campion Foundation	Cooper Foundation
Ameriprise Financial, Inc.	The Cannon Foundation, Inc.	The Crown Family
amfAR (The Foundation for AIDS Research)	Cargill	Cultural Council of Greater Jacksonville, Inc.
Amgen Foundation	Carl and Eloise Pohlad Family Foundation	Daniels Fund
Andrew W. Mellon Foundation	Carnegie Corporation of New York	David and Lucile Packard Foundation
The Annenberg Foundation	The Carol Ann and Ralph V Haile, Jr./ U.S. Bank Foundation	David Bohnett Foundation
Annie E. Casey Foundation	CEA Foundation	Debra Boyan
Arcus Foundation	Charles and Lynn Schusterman Family Foundation	Dekko Foundation
The Atlantic Philanthropies	Charles H. Dater Foundation	Delta Dental of Minnesota
Bank of America	The Children's Trust	Disability Rights Fund
Baptist Community Ministries	The Christensen Fund	Doris Duke Charitable Foundation
The Barr Foundation	CIGNA Foundation	Dyson Foundation
The Barra Foundation	Circle of Service Foundation	Eastern Bank Charitable Foundation
The Bay and Paul Foundations	Citi Foundation	Edward W. Hazen Foundation
Benwood Foundation	Claneil Foundation, Inc.	Ellen & Clarence Peterson Foundation
BHHS Legacy Foundation	ClimateWorks Foundation	Elmina B. Sewall Foundation
Bill & Melinda Gates Foundation	The Clowes Fund, Inc.	Endowment for Health
Blandin Foundation	The Coca-Cola Company	The Energy Foundation
Blue Cross and Blue Shield of Louisiana Foundation	The Coleman Foundation	Enterprise Holdings Foundation
Blue Moon Fund, Inc	College Access Foundation of California	Entertainment Industry Foundation
Blue Shield of California Foundation	The Colorado Health Foundation	Eugene & Agnes E. Meyer Foundation
BNSF Railway	The Colorado Trust	EyeSight Foundation of Alabama
Bohemian Foundation	The Columbus Foundation	Fidelity Foundation
The Boston Foundation	The Commonweal Foundation, Inc.	Fieldstead & Company
The Brico Fund		Fifth Third Foundation

Contributing Organization Members

The Fine Foundation	J. Paul Getty Trust; The Getty Foundation	Mary Reynolds Babcock Foundation	Potomac Health Foundation
Firelight Foundation	The J. Willard and Alice S. Marriott Foundation	Max M. & Marjorie S. Fisher Foundation	The Prudential Foundation
Floyd A. and Kathleen C. Cailloux Foundation	The J.M. Kaplan Fund	The McKnight Foundation	PSEG Services Corp.
The Ford Family Foundation	Jack Kent Cooke Foundation	McNeely Foundation	Public Welfare Foundation
Ford Foundation	The James Irvine Foundation	Medica Foundation	R. Howard Dobbs, Jr. Foundation
Fourth Partner Foundation	Jessie Smith Noyes Foundation	The Medtronic Foundation	Ralph M. Parsons Foundation
Francis Family Foundation	Jewish Community Foundation of Greater Hartford	Mertz Gilmore Foundation	Rasmuson Foundation
Fred & Jean Allegretti Foundation	Jim Joseph Foundation	MetroWest Community Health Care Foundation	RGK Foundation
Frey Foundation	The John R. Oishei Foundation	Meyer Memorial Trust	Rita Allen Foundation
Gaylord and Dorothy Donnelley Foundation	John Randolph Foundation	Middlesex Savings Charitable Foundation	Rockefeller Brothers Fund
General Service Foundation	John Rex Endowment	Mitchell Kapor Foundation	The Rockefeller Foundation
The George Gund Foundation	John T. Vucurevich Foundation	Monterey Peninsula Foundation	Rosenberg Foundation
Georgia Power Foundation	Joy McCann Foundation	The Morris & Gwendolyn Cafritz Foundation	RSF Social Finance
Global Greengrants Fund	Kalliopeia Foundation	Mott Philanthropic	The Russell Family Foundation
Gordon and Betty Moore Foundation	Kansas Health Foundation	Mutual of Omaha Foundation	Saint Luke's Foundation
Grand Victoria Foundation	Kessler Foundation	The Nathan Cummings Foundation	Salem Health & Wellness Foundation
Greater Texas Foundation	The Klarman Family Foundation	National Endowment for Democracy	The Sandy River Charitable Foundation
Green Bay Packers	KnowledgeWorks Foundation	Needmor Fund	The SCAN Foundation
H.W. Siebens Charitable Foundation	Lavelle Fund for the Blind	The Nellie Mae Education Foundation	Sea Change Foundation
Hau'oli Mau Loa Foundation	The Lawrence Foundation	New Field Foundation	Select Equity Group Foundation
Health Care Service Corporation	The Lemelson Foundation	Newell Rubbermaid	Sheltering Arms Foundation
Health Foundation for Western and Central New York	The Leona M. and Harry B. Helmsley Charitable Trust	Nordson Corporation Foundation	The Sherwood Foundation
Health Resources in Action	Lincoln Financial Group	North Carolina Biotechnology Center	Sierra Health Foundation
Healthcare Georgia Foundation	Lisa and Douglas Goldman Fund	North Penn Community Health Foundation	Sisters of St. Joseph Charitable Fund
Hemenway & Barnes	Lloyd A. Fry Foundation	Northwest Area Foundation	The Skoll Foundation
The Home Depot Foundation	The Louis & Harold Price Foundation	Northwestern Mutual Foundation	Slaggie Family Foundation
Huey and Angelina Wilson Foundation	The Louis Calder Foundation	NoVo Foundation	Solidago Foundation
Hyams Foundation, Inc.	Lower Colorado River Authority	Nutter, McClennen & Fish, LLP	The Spencer Foundation
The Hyde Family Foundations	The Lubrizol Foundation	Oak Foundation	The Staten Island Foundation
Illinois Clean Energy Community Foundation	Maine Health Access Foundation	Oklahoma Tobacco Settlement Endowment Trust	Steans Family Foundation
Indian Land Tenure Foundation	The Marclad Foundation	Open Society Foundations	Stella and Charles Guttman Foundation
Information Age Associates	Margaret A. Cargill Foundation	Orfalea Foundation	Stuart Foundation
International Association for the Study of Pain	Margaret Clark Morgan Foundation	Otto Bremer Foundation	The Summit Charitable Foundation
Irene E. & George A. Davis Foundation	The Marion I. and Henry J. Knott Foundation	Peter G. Peterson Foundation	Sunflower Foundation
J. F Maddox Foundation	Mary E. Bivins Foundation	Polk Bros. Foundation	Surdna Foundation

Contributing Organization Members

TCF Foundation
The Tinker Foundation Inc.
Toshiba America Foundation
Travelers Companies
Turner Foundation, Inc.
UniHealth Foundation
United Methodist Health Ministry Fund
University of California
The Virginia G. Piper Charitable Trust
Weingart Foundation
Wells Fargo
Wellspring Advisors, LLC
Wenner-Gren Foundation
Wilburforce Foundation
The William and Flora Hewlett Foundation
The William Bingham Foundation
William J. & Dorothy K. O'Neill Foundation
William Penn Foundation
The Winthrop Rockefeller Foundation
Wiregrass Foundation
The Women's Foundation of California
Woods Charitable Fund, Inc.
XTON LLC
Yawkey Foundations

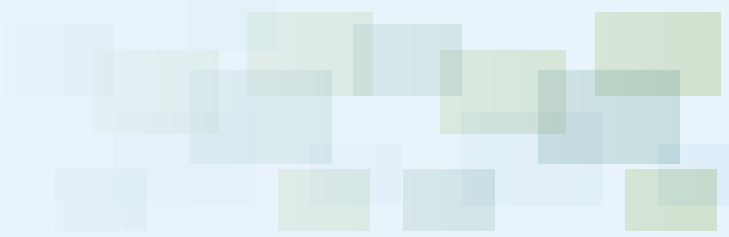
Contributors

We also extend our special thanks to these additional contributors, who supported the work of GMN in 2012.

Archstone Foundation
Argosy Foundation
Berks County Community Foundation
Blue Cross and Blue Shield of Minnesota Foundation
Boettcher Foundation
The Brinson Foundation
The Burton D. Morgan Foundation
Carl and Ruth Shapiro Family Foundation
The Chicago Community Trust
ClearWay Minnesota
Comcast Corporation
Community Foundation of Greater Fort Wayne
Community Foundation Sonoma County
Council on Foundations
East Bay Community Foundation
Edyth Bush Charitable Foundation, Inc.
Fiduciary Counseling/Weyerhaeuser Family Foundation
First Literacy, Inc.
FJC - A Foundation of Philanthropic Funds
Foundation for Child Development
Frances P. Bunnelle Foundation
The George Family Foundation
Howard Hughes Medical Institute
Irving Harris Foundation
Isaac H. Tuttle Fund
The Jay and Rose Phillips Family Foundation
The Joyce Foundation
Koret Foundation
KPMG
Laurie M. Tisch Illumination Fund
Lawson Foundation

Lucile Packard Foundation for Children
McAuley Ministries
Methodist Healthcare Ministries
MicroEdge
Moriah Fund
Napa Valley Community Foundation
New Hampshire Charitable Foundation
Nina Mason Pulliam Charitable Trust
Oregon Community Foundation
Paul G. Allen Family Foundation
Peter and Carmen Lucia Buck Foundation
Raibrook Foundation, Inc
Rapides Foundation
The REACH Healthcare Foundation
The Robert Wood Johnson Foundation
The Skillman Foundation
Stewardship Foundation
The Tow Foundation
The W. Clement & Jessie V. Stone Foundation
The Wallace Foundation
Walther Cancer Foundation

GMN is also supported by individual contributions that help make our work possible, including 100 percent support by our Board of Directors. We extend our thanks to these contributors.



“ I believe that all GMN members are striving to give depth and meaning to the time we spend together. I know that I am benefiting from the work of the regional chapter, both in the opportunities I have to meet and talk with experienced professionals and in the educational programs that have helped me learn this profession. Members who embraced me and my questions inspired something in me that wants to pass along that spirit of openness and inclusion. I’m glad to have a leadership opportunity where I can do my part to help others get the most out of their GMN membership. ”

Leslie Baldwin
 Grants Coordinator
 Boettcher Foundation

1.5 years in field
 1.5 years as GMN member

Thriving with Volunteers

Members are not just the foundation of GMN but also the consumers, decision-makers, and leaders that keep us moving forward. Since the beginning of the organization, volunteers have shaped and shifted our resources and priorities to match their work and the sector. Supporting our volunteers is vitally important to everyone at GMN.

In 2012, we created more opportunities for member development and leadership at the regional chapter level, first by working with current volunteers to identify functional areas where regional chapters needed more support and then by developing additional leadership roles for members who have or want to build skill sets in those areas.

Now, the work of leading a regional chapter is shared by five officers—chair, vice-chair, and chairs for educational programs, membership engagement, and communications—and there are more opportunities for members to use their unique experience and knowledge to help shape GMN.

Thanks to the ongoing dedication of GMN volunteers, 44 regional chapter educational meetings were held in 2012 and 95 percent of meeting attendees found the educational topics relevant to their work.

Preparing members for their volunteer roles is also a key driver of GMN’s volunteer engagement strategy. In 2012, GMN delivered specialized skills training for volunteers at the regional chapter level. More than three-quarters of volunteers report that they developed new or enhanced skills through our specialized training, which improved their job performance and/or organizational effectiveness.

[Interested in volunteering with GMN? Check out our regional leadership openings and national teams »](#)

Volunteers

Rosemary Addison

Dorot Foundation

Regional Membership Committee, New England Chapter

Jeanette Albert

Colorado Creative Industries

Regional Co-Chair, Rocky Mountain Chapter

Jamie Amagai

The Summit Charitable Foundation

Team Leader, Community Managers Team; Conference Committee 2013; Regional Steering Committee, Washington DC Chapter

Sherry Amen

Jim Casey Youth Opportunities Initiative

Conference Committee 2012; Conference Committee 2013

Debbie Anderson

Rancho Santa Fe Foundation

Regional Volunteer, Southern California Chapter

Kim Armstrong

Mutual of Omaha Foundation

GMN Board of Directors; GMNsight Team

Julia Arno, JD

University of California

GMNsight Team

Anne Assehn

Mama Cash

G4 Team

Lusajo Athanas

Africare

GM Guide Team

Andrea Axel

Legal Foundation of Washington

Regional Volunteer, Pacific Northwest Chapter

Daniela Aydin

Open Society Foundations

GM Guide Team

Barbara Bach

Rasmuson Foundation

Regional Volunteer, Pacific Northwest Chapter

Erin Baird

Allegany Franciscan Ministries, Inc.

Conference Committee 2013; Conference Host Committee 2013; Conference Committee 2012; Conference Host Committee 2012; Regional Co-Chair, Florida Chapter

Leslie Baldwin

Boettcher Foundation

Regional Volunteer, Rocky Mountain Chapter

Cheryl Bean

Sunflower Foundation

Co-Chair, Audit Committee; Conference Committee 2012

Joe Behaylo

Open Society Foundations

Body of Knowledge Advisory Group

Ann Beier

Regional Volunteer, Northern California Chapter

Carly Benkov

American Jewish World Service

What Works Webinar Team

Myra Bicknell

Northern California Grantmakers

Regional Volunteer, Northern California Chapter

Kim Blanchard

Wellspring Advisors, LLC

GMNsight Team

Deborah Bloom

Ford Foundation

GMNsight Team

Katrin Blucker-Ludwig

Methodist Healthcare Ministries

Conference Host Committee 2012

Melissa Boilon

The Marclad Foundation

GMNsight Team

Wayne Booze

The Leona M. and Harry B. Helmsley Charitable Trust

Conference Committee 2013

Andrea Brinkman

Spencer Foundation

Regional Program Committee, Midwest Chapter

Shaina Briscoe

The McKnight Foundation

Regional Steering Committee, Minnesota Chapter

Julie Brooks Nyquist

John S. and James L. Knight Foundation

Regional Co-Chair, Florida Chapter

Aimée Bruederle

The William and Flora Hewlett Foundation

Regional Co-Chair, Northern California Chapter

Kelley Buhles

RSF Social Finance

Regional Volunteer, Northern California Chapter

Elissa Buller

Kansas Health Foundation

Regional Program Committee, Midwest Chapter

Jennifer Burran

Lemelson Foundation

Conference Committee 2013; Conference Committee 2012

Nicholas Burt

Lloyd A. Fry Foundation

Regional Program Committee, Midwest Chapter

Val Bush

Paul G. Allen Family Foundation

Regional Volunteer, Pacific Northwest Chapter

Anna Campbell

New York City Department of Cultural Affairs

Regional Program Committee, New York Chapter

Kim Canfield

Peter G. Peterson Foundation

Regional Program Committee, New York Chapter

Angela Carabine

The J.M. Kaplan Fund

Regional Membership Committee Co-Chair, New York Chapter

Carla Cassinelli

Bill & Melinda Gates Foundation

Body of Knowledge Advisory Group

Gillian Cervero

California HealthCare Foundation

Regional Co-Chair, Northern California Chapter

Michele Chader

The Colorado Trust

Regional Volunteer, Rocky Mountain Chapter

Candy Champion

Turner Foundation, Inc.

Conference Committee 2013

Chui Chan

Conference Committee 2012

Miyasha Chappell

Morris & Gwendolyn Cafritz Foundation

Conference Committee 2013; Regional Co-Chair, Washington DC Chapter

Danielle Cheslog

Otto Bremer Foundation

Regional Steering Committee, Minnesota Chapter; Conference Host Committee 2012

Nancy Claassen

Kansas Health Foundation

Regional Program Committee, Midwest Chapter

Volunteers

Hannah Clark

Grand Victoria Foundation

Regional Program Committee, Midwest Chapter

Susan Clark

Gaylord and Dorothy Donnelley Foundation

Community Managers Team; Regional Co-Chair, Midwest Chapter

Laura Cogburn

J. Paul Getty Trust

Community Managers Team

John Colborn

Ford Foundation

Regional Program Committee, New York Chapter

Jeanmarie Collens

The Atlantic Philanthropies

What Works Webinar Team

Kent Cozad

amfAR (The Foundation for AIDS Research)

Region Program Committee, New York Chapter

Heather Craig

Medica Foundation

Regional Co-Chair, Minnesota Chapter

Teresa Crawford

Frey Foundation

Community Managers Team; Regional Volunteer, Midwest Chapter

Guenevere Crum

The Able Trust

Conference Committee 2013; Conference Host Committee 2013; Regional Co-Chair, Florida Chapter

Dana Cunningham

ClimateWorks Foundation

Regional Volunteer, Northern California Chapter

Amy D'Amico

Green Tree Community Health Foundation

Regional Program Committee Chair, Delaware Valley Chapter

Corey Davis

The Boston Foundation

Regional Co-Chair, New England Chapter; Body of Knowledge Advisory Group

Tanisha Davis

Archstone Foundation

Regional Volunteer, Southern California Chapter

Bridget DeLeon

Saint Luke's Foundation

Regional Co-Chair, Ohio Chapter

Linda Diamond

Doris Duke Charitable Foundation

Conference Committee 2013; Conference Committee 2012

Christy Dickinson

Arts Midwest

G4 Team

Erin Dirksen

Bush Foundation

Regional Steering Committee, Minnesota Chapter

Anne Douglas

Southwest Florida Community Foundation

Regional Volunteer, Florida Chapter

Cynthia Drennan

Sisters of St. Joseph Charitable Fund

G4 Team; Regional Steering Committee, Ohio Chapter

Stephanie Duffy

The McKnight Foundation

GMN Board of Directors; Co-Chair, Nominating Committee 2012; Meeting Host Volunteer, Minnesota Chapter

Laura Duty

King Foundation

G4 Team

Loretta Duvall

The Children's Trust

Conference Committee 2013; Regional Volunteer, Florida Chapter

Guy Eakin

American Health Assistance Foundation

GMN Board of Directors

Erica Eisner Kosova

The Crown Family

Regional Volunteer, Midwest Chapter

Elaine England

Anschutz Family Foundation

Regional Volunteer, Rocky Mountain Chapter

Rocele Estanislao

The California Wellness Foundation

Community Managers Team

Dolores Estrada

The California Endowment

GMN Board of Directors; GM Guide Team; Conference Committee 2013; Conference Committee 2012; Regional Volunteer, Southern California Chapter

Satonya Fair

Annie E. Casey Foundation

Conference Committee 2013

Jordan Faires

Conrad N. Hilton Foundation

Fundraising Team

Armanda Famiglietti

The Nathan Cummings Foundation

Body of Knowledge Advisory Group

Claudinne Feliciano

JP Morgan Chase Foundation

Conference Committee 2013; Conference Committee 2012; Regional Program Committee, New York Chapter

Geula Ferguson

Florida Philanthropic Network

Regional Volunteer, Florida Chapter

Tara Ficek

First 5 LA

Regional Volunteer, Southern California Chapter

Jenny Filer

PA Performing Arts on Tour

Regional Program Committee, Delaware Valley Chapter

Alexis Fish

Bank of America

Conference Committee 2013; Conference Committee 2012

Susan Fish

Hemenway & Barnes

Regional Roundtable Coordinator, New England Chapter

Adrienne Fisher

Doris Duke Charitable Foundation

Body of Knowledge Advisory Group

Nancy Fisher

The Columbus Foundation

Regional Steering Committee, Ohio Chapter

Myriam Fizazi-Hawkins

National Endowment for Democracy

Regional Steering Committee, Washington DC Chapter

Brooke Foley

Empire Health Foundation

GM Guide Team

Judith Foley

Salem Health & Wellness Foundation

Fundraising Team; Regional Program Committee, Delaware Valley Chapter

Kim Foster

Francis Family Foundation

GMN Board of Directors; Conference Committee 2013; Conference Committee 2012

Samantha Franklin

Johnson Family Foundation

What Works Webinar Team

Trish Franklin

Daniels Fund

Regional Volunteer, Rocky Mountain Chapter

Volunteers

Jana Fry

Bill & Melinda Gates Foundation

Regional Membership Committee, Pacific Northwest Chapter

Susan Fulton

Endowment for Health

GMN Board of Directors - Co-Chair; GMN Executive Committee; Co-Chair, Audit Committee; GM Guide Team; Conference Committee 2013; Conference Committee 2012; Regional Program Committee, New England Chapter

Roger Fuse Brown

GMN Board of Directors; Finance Committee

Ann Gael

Conference Committee 2012

Allison Gister

The Annenberg Foundation

Conference Committee 2012; GM Guide Team; GMNSight Team; Regional Co-Chair, Southern California Chapter

Jonathan Goldberg

Surdna Foundation

GMN Board of Directors ; Conference Committee 2013

Chad Gorski

Howard Hughes Medical Institute

GMN Board of Directors; GMN Executive Committee; Nominating Committee 2012; Body of Knowledge Advisory Group

Danielle Gray

R. Howard Dobbs, Jr. Foundation

Regional Volunteer, Southeast Chapter

Candice Griffin

The ASCO Cancer Foundation

Community Managers Team; GM Guide Team

Lauren Groves

Susan G. Komen for the Cure

GM Guide Team; Regional Volunteer - Communications, Texas Chapter

Kecia Haggins

Georgia Power Foundation

Regional Chair, Southeast Chapter

Shirley Hamilton

EyeSight Foundation of Alabama

G4 Team; Regional Volunteer, Southeast Chapter

Phillip Harmon

Mid Atlantic Arts Foundation

G4 Team

Tara Havlicek

Mitsubishi Electric America Foundation

Conference Committee 2013

Kelly Hayashi

Stuart Foundation

GM Guide Team; Regional Volunteer, Northern California Chapter

Nancy Herzog

National Endowment for Democracy

GMN Board of Directors; Body of Knowledge Advisory Group; GM Guide Team; What Works Webinar Team; Regional Co-Chair, Washington DC Chapter; Regional Steering Committee, Washington DC Chapter

Deborah Hessler

Edyth Bush Charitable Foundation, Inc.

Conference Host Committee 2013; Regional Volunteer, Florida Chapter

Lydia Hickey

Houston Endowment Inc.

Regional Co-Chair, Texas Chapter

Jessica Hickok

The James Irvine Foundation

Regional Volunteer, Northern California Chapter

Maddelyn High

Meyer Memorial Trust

Regional Membership Committee, Pacific Northwest Chapter

Joyce Holliman

The Kresge Foundation

Regional Volunteer, Midwest Chapter

Lucy Hollis

The Atlantic Philanthropies

G4 Team

Anita Jackson

The W. Clement & Jessie V. Stone Foundation

Finance Committee; Regional Volunteer, Northern California Chapter

Katherine Jagow

Moriah Fund

Regional Steering Committee, Washington DC Chapter

Adriana Jimenez

Surdna Foundation

Conference Committee 2013

Beery Jimenez

Proteus Fund

G4 Team

Jody Jonas

Lutheran Community Foundation

Regional Steering Committee, Minnesota Chapter

Carolyn Kelly

Graham Foundation for Advanced Studies in the Fine Arts

Meeting Host Volunteer, Midwest Chapter

June Kirch

The Tow Foundation

Regional Membership Committee, New York Chapter; Regional Volunteer, New York Chapter

Lee Klejnot

Bill & Melinda Gates Foundation

Regional Volunteer, Pacific Northwest Chapter

Marije Klep

Open Society Foundations

Regional Program Committee, New York Chapter

Amber Knox

Bullitt Foundation

Regional Program Chair, Pacific Northwest Chapter

Jennifer Kolde

Grotto Foundation

Regional Steering Committee, Minnesota Chapter

Irene Korenfield

Ford Foundation

GMNSight Team

Jean Kramarik

Burroughs Wellcome Fund

Co-Chair, Conference Committee 2013; Conference Host Committee 2012

Jordan Kramer

Planned Parenthood Federation of America

Conference Committee 2013; Conference Committee 2012; G4 Team; Regional Program Committee, New York Chapter

Kathy Ladiner

Nordson Corporation Foundation

Regional Co-Chair, Ohio Chapter

Sarah Lamothe

Citi Foundation

Regional Membership Committee, New York Chapter

Deb Leaf

Slagge Family Foundation

Conference Committee 2013

Lori LeBlue

Lower Colorado River Authority

Conference Host Committee 2012; Regional Volunteer - Programs, Texas Chapter

Paula Lentoni

Mott Philanthropic

G4 Team; Regional Co-Chair, New England Chapter

Volunteers

Adam Liebling

American Society for the Prevention of Cruelty to Animals (ASPCA)

Conference Committee 2013; Conference Committee 2012; Regional Advisory Committee, New York Chapter; Regional Program Committee, New York Chapter

Susana Lopez

Kaiser Permanente

Regional Volunteer, Southern California Chapter

Monique Loseke

Bonfils-Stanton Foundation

Regional Volunteer, Rocky Mountain Chapter

Karissa Lowe

Meyer Memorial Trust

Regional Volunteer, Pacific Northwest Chapter

Hope Lyons

Rockefeller Brothers Fund

Regional Co-Chair, New York Chapter

Cathy Manovi

Gordon and Betty Moore Foundation

Team Leader, GM Guide Team

Rebecca Martin

J. Paul Getty Trust; The Getty Foundation

Community Managers Team

Melanie Matthews

Campion Foundation

Conference Committee 2013; Conference Committee 2012; Regional Co-Chair, Pacific Northwest Chapter

Marcus McGrew

The Kresge Foundation

GMN Board of Directors - Co-Chair; GMN Executive Committee; Conference Committee 2013; Conference Committee 2012

Christine Meek

Community Foundation of Greater Fort Wayne

Team Leader, Community Managers Team

Adin Miller

Jewish Community Federation and Endowment Fund

Nominating Committee 2013; What Works Webinar Team

Carol Miller

Greater Texas Foundation

Conference Committee 2013; Conference Host Committee 2013; Co-Chair, Conference Committee 2012; What Works Webinar Team; Regional Co-Chair, Texas Chapter

Elizabeth Murph

Harold K.L. Castle Foundation

G4 Team

Linda Musumeci

American Philosophical Society

Regional Chair, Delaware Valley Chapter

Brenda Najera

PetSmart Charities, Inc.

Conference Committee 2013

Meridian Napoli

Comcast Corporation

Team Leader, What Works Webinars Team; Body of Knowledge Advisory Group

Elizabeth Niehaus

Margaret A. Cargill Foundation

Meeting Host Volunteer, Minnesota Chapter

Ericka Novotny

Arcus Foundation

GMN Board of Directors; Co-Chair, Nominating Committee 2013; Conference Committee 2012; Co-Chair, Nominating Committee 2012

Ruth Oku-Ampofo

The Christensen Fund

Regional Volunteer, Northern California Chapter

Phoebe O'Leary

Meyer Memorial Trust

Regional Volunteer, Pacific Northwest Chapter

June O'Neill

Philadelphia Cultural Fund

Regional Membership Chair, Delaware Valley Chapter

Janice Opalski

The Robert Wood Johnson Foundation

Body of Knowledge Advisory Group

Maggie Osborn

Florida Philanthropic Network

Conference Committee 2013; Conference Host Committee 2013

Shani Pankam

Hyams Foundation, Inc.

Regional Liaison, New England Chapter; Regional Program Committee, New England Chapter

Jennifer Pedroni

North Penn Community Health Foundation

GMN Board of Directors - Treasurer; GMN Executive Committee; Audit Committee; Chair, Finance Committee; Conference Committee 2013; Conference Committee 2012

Christopher Percopo

The Leona M. and Harry B. Helmsley Charitable Trust

Co-Chair, Conference Committee 2012; G4 Team

Susan Perry

Hyams Foundation, Inc.

Regional Liaison, New England Chapter; Regional Program Committee, New England Chapter

Danette Peters

Mary Reynolds Babcock Foundation

Co-Chair, Conference Committee 2013; Conference Committee 2012; What Works Webinar Team

Meghan Pietrantonio

SunTrust

Regional Volunteer, Southeast Chapter

Orneata Prawl

Nominating Committee 2012; GM Guide Team; Regional Advisory Committee, New York Chapter; Regional Membership Committee, New York Chapter

Tiffany Price

Mitchell Kapor Foundation

GMN Board of Directors - Secretary; Nominating Committee 2013; Conference Committee 2013; Nominating Committee 2012; Conference Committee 2012; Regional Volunteer, Northern California Chapter

Melanie Quackenbush

Glenmede Trust Company, N.A.

Regional Program Committee, Delaware Valley Chapter

Russell Ramm

Conference Host Committee 2012

Rosa Ray

The Coca-Cola Company

Regional Volunteer, Southeast Chapter

Dee Reed

CIGNA Foundation

Conference Committee 2012; Regional Program Committee, Delaware Valley Chapter

Anie Reid

Scott & White Healthcare

Conference Host Committee 2012

Joanne Reilly

Longwood Foundation

GMNSight Team

Kyle Reis

Ford Foundation

G4 Team; Conference Committee 2013; Conference Committee 2012; Regional Program Committee, New York Chapter

Thomas Reuter

Deaconess Community Foundation

G4 Team

Karen Reynolds

McNeely Foundation

Regional Steering Committee, Minnesota Chapter

Ruth Reynolds

Burroughs Wellcome Fund

GM Guide Team

Bernadette Richards

Virgin Islands Housing Finance Authority

Conference Committee 2013

Bonnie Rivers

Carnegie Corporation of New York

GMN Board of Directors; G4 Team; Fundraising Team; Conference Committee 2013

Margie Robinson

Public Welfare Foundation

GM Guide Team; Conference Committee 2013; Conference Committee 2012; Regional Steering Committee, Washington DC Chapter

Sharon Robinson

The Home Depot Foundation

Conference Host Committee 2012

Donald Roeseke

The Rockefeller Foundation

Conference Committee 2013

Volunteers

Kim Romero

The Richard H. Driehaus Foundation
Regional Volunteer, Midwest Chapter

Courtney Rottman, JD

Susan G. Komen for the Cure
GM Guide Team; What Works Webinar Team;
G4 Team

Javier Sanchez

The Home Depot Foundation
Conference Committee 2013

Adam Sanders

The Leona M. and Harry B. Helmsley Charitable Trust
Conference Committee 2013; Regional Program Committee, New York Chapter

Tamar Satterwhite

National Endowment for Democracy
Regional Steering Committee, Washington DC Chapter

Gretchen Schackel

James F. and Marion L. Miller Foundation
Regional Co-Chair, Pacific Northwest Chapter

Karen Scheboth

The SCAN Foundation
Conference Committee 2012; Conference Committee 2013

Kristine Schoenow

State of MI - Bureau of Community Action and Economic Opportunity in Dept of Human Services
GMN Board of Directors; Co-Chair, Conference Committee 2012

Diane Schorr

Suder Foundation
Regional Volunteer - Membership, Texas Chapter

Amy Scop

The California Wellness Foundation
Conference Committee 2012; Regional Co-Chair, Southern California Chapter

John Seidl

F.B. Heron Foundation
Regional Program Committee Chair, New York Chapter

Priya Selvakumar

American Diabetes Association
GM Guide Team

Cathy Sever

United Health Foundation
GM Guide Team

Jackie Shaul

Annie E. Casey Foundation
G4 Team

Kerry Shaw

Osteopathic Heritage Foundation of Nelsonville
Regional Steering Committee, Ohio Chapter

Suzanne Shea

Ford Foundation
Body of Knowledge Advisory Group; Conference Committee 2013; Conference Committee 2012

Anela Shimizu

Hau'oli Mau Loa Foundation
Body of Knowledge Advisory Group; G4 Team

Genise Singleton

The Kresge Foundation
Conference Committee 2013; Conference Committee 2012; Regional Co-Chair, Midwest Chapter

Tamara Siskind

Juvenile Diabetes Research Foundation
Regional Membership Committee, New York Chapter

Stacey Smida

Cargill
Regional Co-Chair, Minnesota Chapter

Michelle Smith-Beckley

Medical College of Wisconsin - Healthier Wisconsin Partnership Program
Conference Committee 2013

Mary Sobeki

Needmor Fund
Region Steering Committee, Ohio Chapter

Mariama Souare

National Endowment for Democracy
Conference Committee 2013; Regional Co-Chair, Washington DC Chapter

Ursula Stewart

New York State Health Foundation
Regional Membership Committee Co-Chair, New York Chapter

Julia Stoumbos

Kessler Foundation
Body of Knowledge Advisory Group

La Monica Stowers

Kaiser Permanente
Regional Volunteer, Southern California Chapter

Elizabeth Tabita

The California Endowment
Regional Steering Committee, Southern California Chapter

Patrick Taylor

The Energy Foundation
Co-Chair, Nominating Committee 2013; G4 Team; Regional Volunteer, Northern California Chapter

Yeshi TekleMichael

The Christensen Fund
Body of Knowledge Advisory Group

Susan Thompson

The Valley Baptist Legacy Foundation
Conference Host Committee 2012

Candy Torres

The Prudential Foundation
Conference Committee 2013

Daphny Toussaint

Rockefeller Brothers Fund
Regional Membership Committee, New York Chapter

Rebecca Van Sickle

The Atlantic Philanthropies
GMN Board of Directors; Finance Committee

Betty Vernon

Floyd A. and Kathleen C. Cailloux Foundation
Conference Host Committee 2012

Debi Vought

Burroughs Wellcome Fund
Team Leader, GM Guide Team

Vivian Walker

Regional Volunteer, Southeast Chapter

Brenda Walters

Change a Life Foundation
Regional Co-Chair, Southern California Chapter

Donna Walton

Polk Bros. Foundation
Regional Volunteer, Midwest Chapter

Jane Ward

Eugene & Agnes E. Meyer Foundation
Conference Committee 2013; Regional Steering Committee, Washington DC Chapter

Sheri Warren

Potomac Health Foundation
GM Guide Team

Jessica Whitehouse

SPCA Florida
Conference Host Committee 2013

Arlene Wilson-Grant

Disability Rights Fund
GM Guide Team

Cristina Yoon

The Skoll Foundation
GMN Board of Directors; Nominating Committee 2012; Finance Committee; Community Managers Team

Irena Zlatanovic

International Association for the Study of Pain
GM Guide Team