



# PEAK2026: Rooted in Purpose, Growing Together

**A SPONSOR GUIDE FOR  
OUR 30TH ANNIVERSARY  
CONVENING**



**MARCH 25-27, 2026**

**HYATT REGENCY ST. LOUIS  
AT THE ARCH**



# About PEAK2026

## DEAR FRIENDS, COLLEAGUES, AND PARTNERS,

PEAK2026 is our 30th anniversary celebration and a testament to the very heart of philanthropy: the love of humanity. Our theme, Rooted in Purpose, Growing Together, will highlight how you—our members and community—are leading the charge. In these challenging and uncertain times, you are spearheading innovations in data, technology, and grants management, and working in true partnership to better serve communities.

From March 25–27, 2026, in the vibrant city of St. Louis, Missouri, we are excited to bring together grants professionals to lead during this pivotal moment.

Last year, we were thrilled by the record-breaking support our sponsorship packages received. We look forward to another year of radical support for our convening and our community from our members and partners.

We invite you to demonstrate your commitment to equitable grantmaking and the PEAK community by partnering with us for PEAK2026. This is an opportunity to amplify your mission and connect with a dedicated network of change agents.

On behalf of our board and staff, thank you for being a vital part of our movement to reimagine philanthropy.

With gratitude,

PEAK2026 Convening Co-Chairs

## CONVENING CO-CHAIRS



**Monica Thorns**  
Christopher Family  
Foundation



**Rokeya Rahman**  
Mellon Foundation



**Kelsey Andersen,**  
Arcus Foundation

MARCH 25–27, 2026

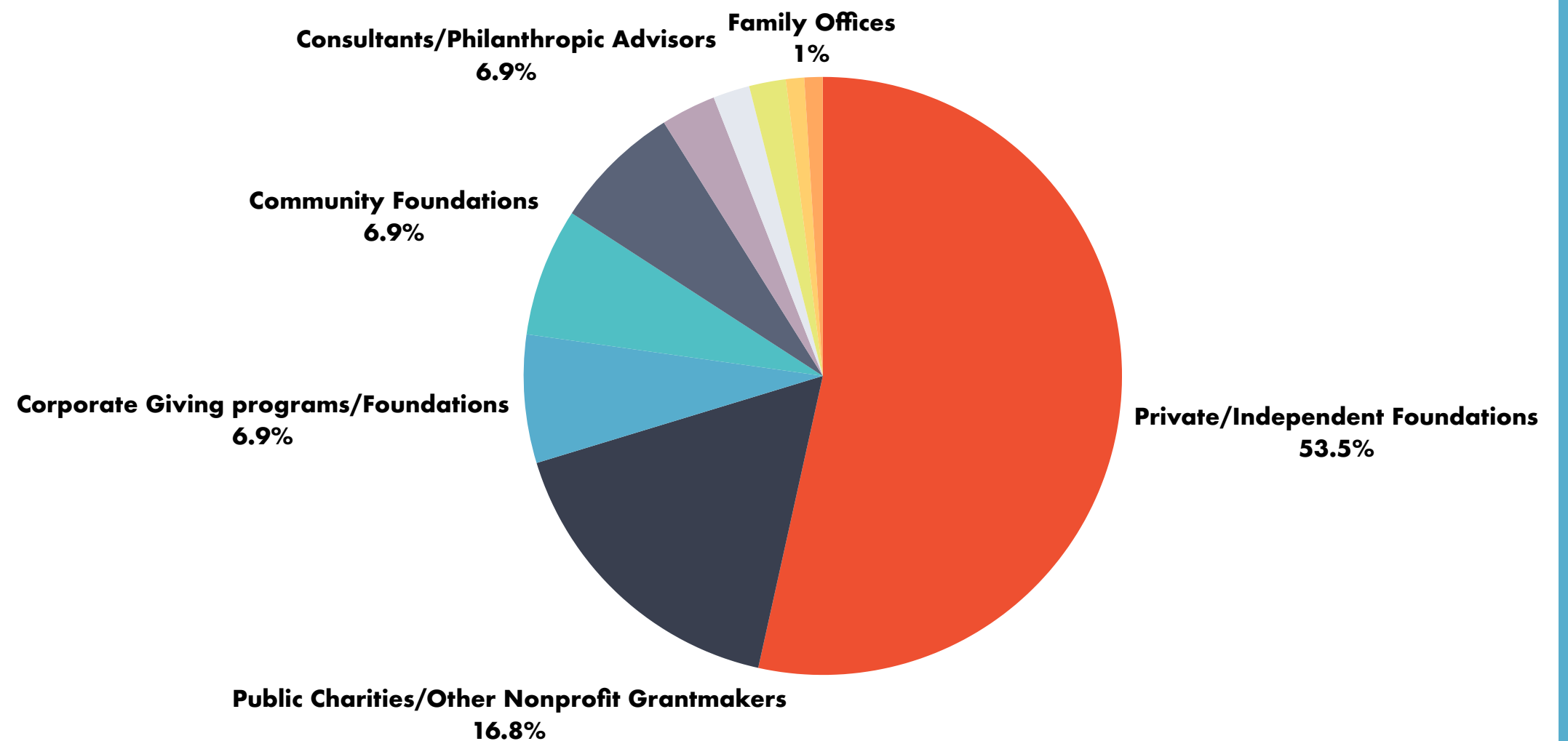
#PEAK2026stl Rooted in Purpose,  
Growing Together



# Strategic Sponsorship Opportunity

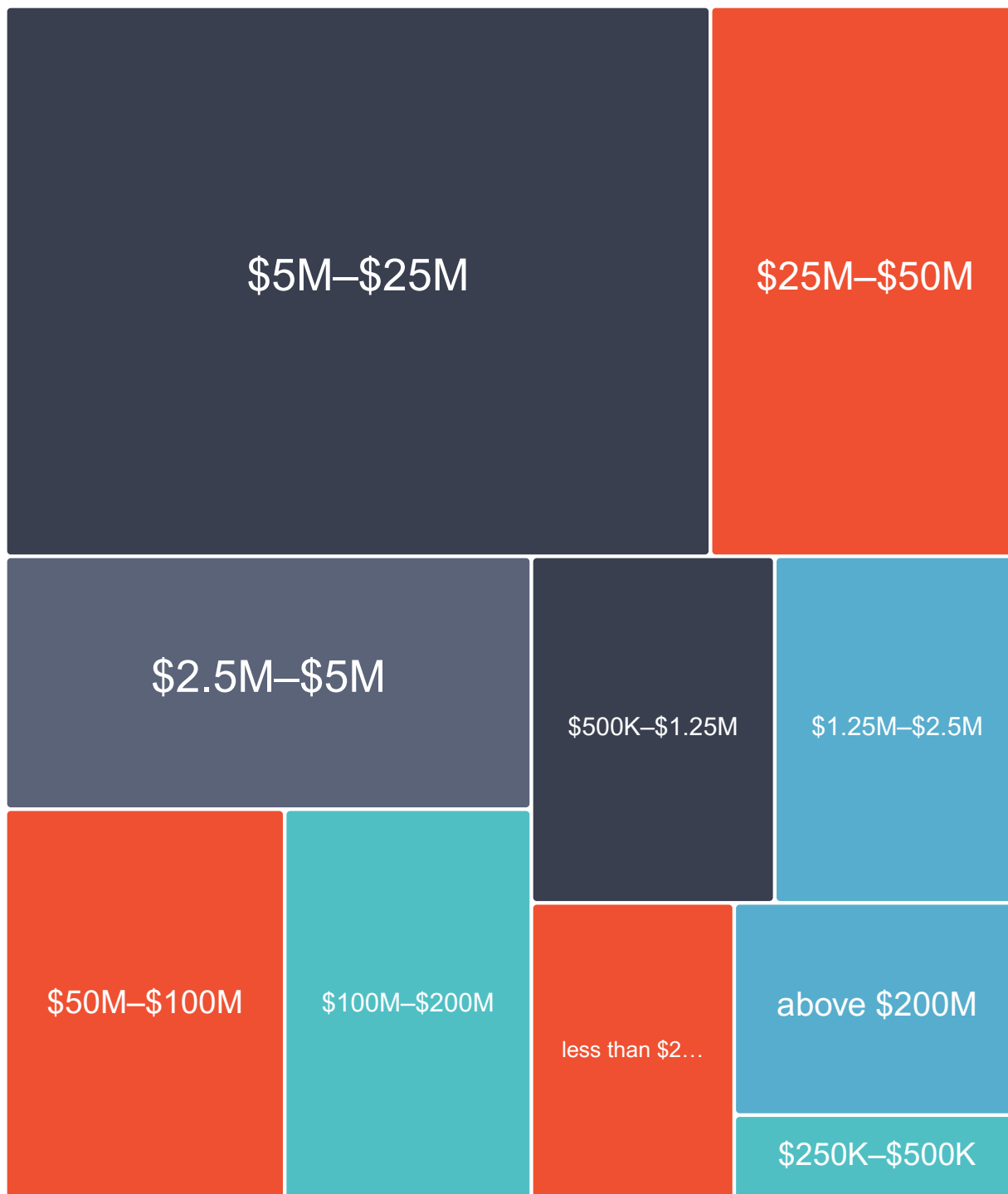
## A SNAPSHOT OF OUR CONTRIBUTING ORGANIZATION MEMBERS

- Private/Independent Foundations
- Public Charities/Other Nonprofit Grantma...
- Corporate Giving programs/Foundations
- Community Foundations
- Consultants/Philanthropic Advisors
- Philanthropy-Supporting Organizations/F...
- Government/Public Entities
- Operating Foundations
- Limited Liability Companies
- Family Offices



# Who's Coming?

## BREAKDOWN OF CONTRIBUTING ORGANIZATION MEMBERS BY ANNUAL GIVING



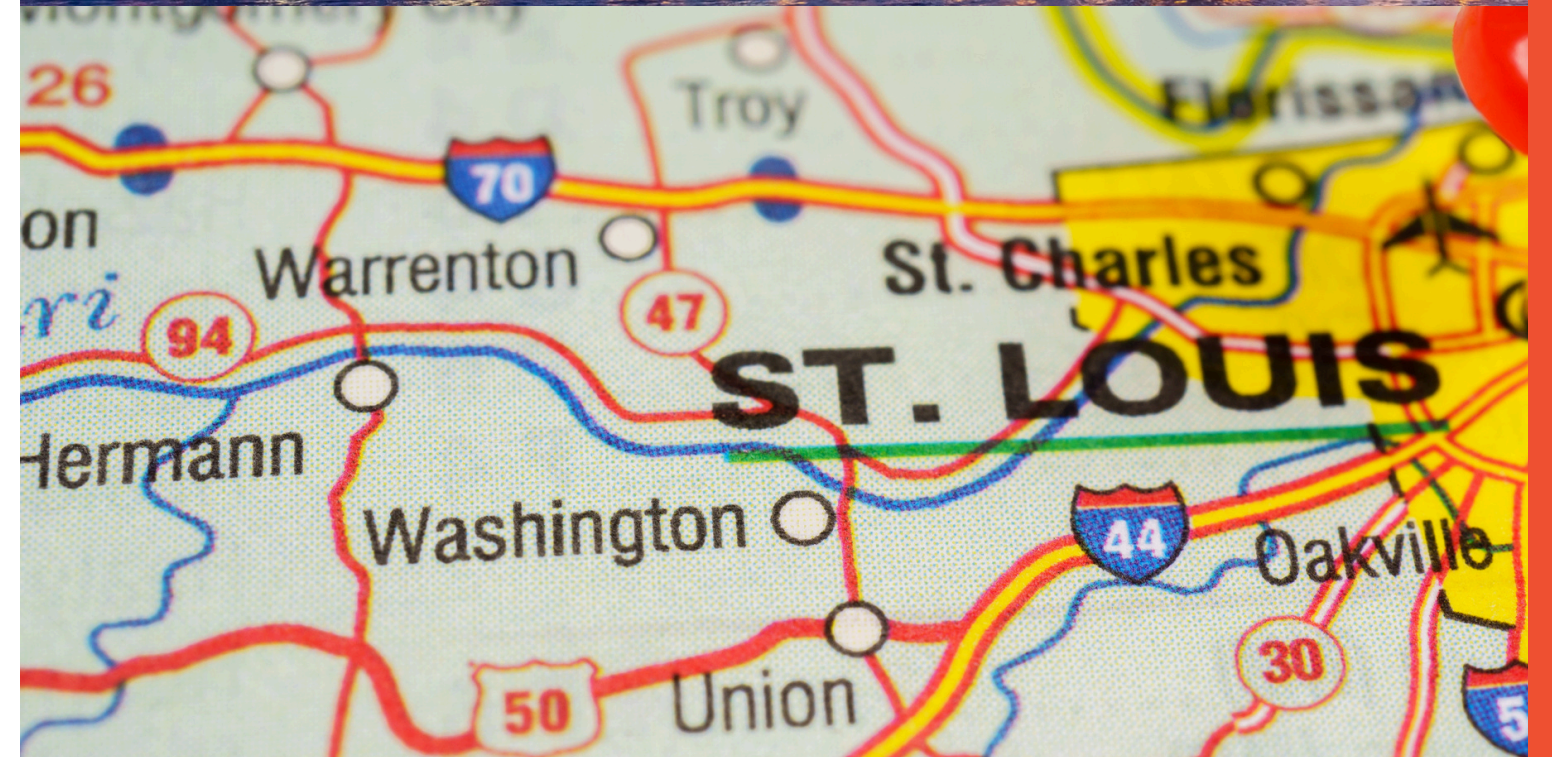
## JOB BANDS IN OUR NETWORK

- **56%** PROFESSIONAL POSITIONS
- **18%** SUPERVISORY/ MANAGEMENT POSITIONS
- **14%** INTERNAL/ BUSINESS SUPPORT POSITIONS
- **12%** EXECUTIVE POSITIONS

## ↓ BY THE NUMBERS

- **550+** Contributing Organization Members
- **2,500+** organizations in our network
- **8,000+** people in our network
- **350+** volunteer leaders

## INSIDE OUR NETWORK



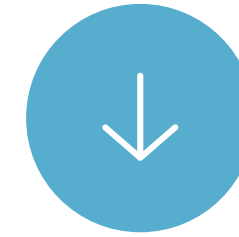


# Thank You

## 2025 Sponsors

- Annenberg Foundation
- Archstone Foundation
- Ascendium Education Group
- Berluche Giving Fund
- Bush Foundation
- Dogwood Health Trust
- Foundation for Louisiana
- HealthPath Foundation of Ohio & Public Health Fund of Ohio
- ImagineCRM
- JPMorgan Chase & Co.
- Maddie's Fund
- Marguerite Casey Foundation
- May & Stanley Smith Charitable Trust
- Mitsubishi Electric America Foundation
- Mother Cabrini Health Foundation
- Nathan Cummings Foundation
- Robert Wood Johnson Foundation
- Surdna Foundation
- The Grove Foundation
- The Lemelson Foundation
- The Leona M. and Harry B. Helmsley Charitable Trust
- The Reis Foundation
- The Turner Foundation
- Walton Family Foundation
- Blackbaud
- Bonterra
- Fluxx
- Foundant+SmartSimple
- GivingData
- Salesforce
- Sputnik Moment
- Submittable
- Temelio
- Blue Cross and Blue Shield of North Carolina Foundation
- Conrad N. Hilton Foundation
- Kenneth Rainin Foundation
- Margaret A. Cargill Philanthropies
- Resources Legacy Fund
- Rose Community Foundation
- Weingart Foundation

# Sponsorship Packages



## TITLE SPONSORSHIPS

These high value sponsorships, named for influential St. Louis leaders and landmarks, include registrations, an opportunity to directly address the PEAK convening audience, and heightened visibility across PEAK platforms leading up to and after PEAK2026. A detailed benefit breakdown can be found on page 9.

### LACLEDE'S LEGACY | \$100,000

This is our premier partnership opportunity, offering an exclusive chance to align your organization with PEAK Grantmaking's mission at the highest level. As our top sponsor, you will be a celebrated leader of the PEAK community, demonstrating an unparalleled commitment to transforming philanthropy.

### CONFLUENCE VISIONARY | \$75,000

As a cornerstone sponsor, your organization will have a significant presence at PEAK2026, showcasing your dedication to our community and the advancement of equitable grantmaking. You will be a recognized partner in our mission to drive positive change across the sector.

### SOULARD PATRON | \$50,000

This sponsorship offers a prominent opportunity to connect with our community and highlight your organization's commitment to PEAK's work. You will be a key partner in helping us create a dynamic and impactful convening experience for all attendees.

[Complete the support form](#)

### EADS BRIDGE BUILDER | \$25,000

This sponsorship tier provides a focused opportunity to support a key element of the convening, allowing you to build meaningful connections with our attendees and demonstrate your commitment to our shared goals. Choose from a variety of impactful events.

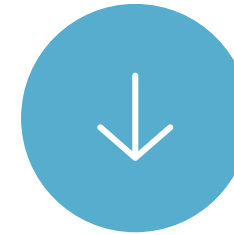
- **Keynote:** Sponsor one of our influential keynote speakers and get your brand in front of all attendees.
- **Welcoming Reception:** Sponsor our festive opening night reception.
- **Breakout Sessions:** Exclusively sponsor one day of our dynamic breakout sessions

### GATEWAY CHAMPION | \$20,000

These sponsorships allow you to align your brand with specific convening components that are critical to our community's growth and well-being. By supporting these offerings, you enable us to provide accessible and valuable experiences for our attendee.

- **Accessibility:** Support our efforts to make PEAK2026 as inclusive and accessible as possible. By sponsoring this, you will directly help us provide essential services like closed captioning for keynote and breakout sessions, ensuring all attendees can fully participate. PEAK Grantmaking has signed the Disability & Philanthropy Forum's Disability Inclusion Pledge, and we are committed to making PEAK2026 an example of inclusive events for the philanthropic sector.
- **Career Center and Coaching:** PEAK Grantmaking is committed to providing career growth opportunities for our members and lifting up equitable hiring practices. At PEAK2026, the Career Center will provide resources and support, including a headshot studio and individual coaching sessions focused on personal and professional growth. These are some of our most sought-after offerings, and your sponsorship ensures they remain complimentary for all attendees.
- **Virtual Convening:** Sponsor the virtual component of PEAK2026, allowing us to extend the convening experience to a broader audience.

# Sponsorship Packages



## HEARTLAND PARTNER | \$15,000

This level provides a range of opportunities to get your name in front of attendees and highlight your support for the PEAK community.

- **Solutions Center Activity:** Drive attendee engagement and boost exhibitor visibility by sponsoring our popular Solutions Center Activity.
- **Volunteer Reception:** Thank and celebrate our incredible volunteers who make this convening possible.\*
- **Newcomer and GM101 Reception:** Celebrate our GM101 graduates and welcome new attendees to help them feel at home in the PEAK community.\*
- **Pre-convening Chapter and Peer Group Volunteer Leader Retreat:** Support our outstanding chapter and peer group volunteer leaders as they develop leadership skills and build networks.\*
- **Pre-convening Session:** Sponsor one of our special sessions offered before the main convening begins.\*
- **Networking Breakfast and Pop-Up Roundtables:** Support a dedicated space for attendees to connect and learn from one another.
- **Wellness:** Align your brand with our commitment to well-being by sponsoring a wellness activity or space.
- **PEAK2026 App:** In lieu of printed materials, we're investing in our event app, CVENT. Your sponsorship helps us move away from paper and disposable forms of communication.
- **Graphic Facilitation:** Sponsor the visual capture of our three keynotes through a series of graphic recordings to be shared with the community.

*\*You will have the opportunity to share remarks at these events.*

## SHOW-ME SPONSOR | \$10,000

These sponsorships offer a high-visibility opportunity to support key community-building events and activities throughout the convening.

- **Peer Network Meetings:** Sponsor the in-person gatherings of our 14 chapters and 11 peer groups, allowing these communities to connect and learn from one another.
- **Board Alumni Breakfast:** Sponsor a special event to celebrate our board alumni and their continued commitment to PEAK.
- **Social Media Wall:** Engage attendees and amplify your brand by sponsoring our interactive social media wall.
- **Speed Networking:** Sponsor this fun and fast-paced event that helps attendees make new connections.

## RIVER CITY FRIEND | \$5,000

This is a great opportunity to show your support for key elements of the convening that foster networking and community.

- **PEAK2026 Planning Committee Reception:** Celebrate the hard work of our planning committee.
- **Coffee Breaks:** Fuel our attendees' learning and networking throughout the day by sponsoring a coffee break.
- **Scholarships:** Partner with PEAK to promote inclusivity by offering scholarships to sector professionals who may not be able to attend due to financial constraints. Each scholarship covers the cost of lodging and registration fees for three participants.



**Complete the support form**

MARCH 25-27, 2026

#PEAK2026stl Rooted in Purpose,  
Growing Together

SPONSORSHIP LEVEL	LACLEDE'S LEGACY \$100,000	CONFLUENCE VISIONARY \$75,000	SOULARD PATRON \$50,000	EADS BRIDGE BUILDER \$25,000	GATEWAY CHAMPION \$20,000	HEARTLAND PARTNER \$15,000	SHOW-ME SPONSOR \$10,000	RIVER CITY FRIEND \$5,000
Sponsor Level Benefits	3 any level benefits	2 any level benefits	2 any level benefits	1 any level benefits	1 Gateway Champion level benefit	1 Heartland Partner level benefit	1 Show-Me Sponsor level benefit	1 River City Friend level benefit
Social media mention and tag in a sponsor shout-out prior to the convening	3	3	2	2	1	1	1	1
Invitation to special 30th anniversary mix and mingle	✓	✓	✓	✓	✓	✗	✗	✗
Included Registrations	6	4	2	1	✗	✗	✗	✗
Recognition in promotional emails for PEAK2026	3	2	2	1	1	1	1	1
PEAK Solutions Center Exhibitor Package	✓	✓	✓	✓	✓	✓	✗	✗
Recognition on the PEAK2026 website, convening platform, and in our 2026 annual report	✓	✓	✓	✓	✓	✓	✓	✓
Up to three (3) minutes to address attendees during the in-person or virtual convening.	✓	✓	✓	✓	✓	✓	✗	✗

**Complete the support form**

# PEAK2026

# Solutions Center

As we learn, share, and evolve, we want to consider how we position you, our vendor partners, within our community as thought partners, leaders, and collaborators to our funder members. **That's why we are excited to offer our Solutions Center again this year.** We hope to create a space that is its own emergent learning community where you can showcase your knowledge and offerings and be in conversation with our members.

Supporting at another level? Vendor partners who sponsor at \$15,000 or higher will receive a sponsored webinar in 2026, and vendor partners who sponsor at \$20,000 or higher will receive a sponsored webinar and sponsored insight post in 2026.



## Join us as a Solutions Center vendor for \$6,500



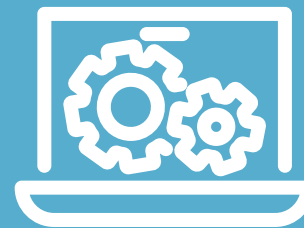
### EXHIBITOR BOOTH SPACE

10' x 10' exhibitor booth space with a 6' table and two chairs



### CONFERENCE REGISTRATIONS

Up to (2) two; includes access to all programming, meals, and networking opportunities.



### VIRTUAL DEMO DAY

Participation in demo day during virtual PEAK convening



### RECOGNITION ALL YEAR

Recognition in PEAK's annual report and on the PEAK2026 website.



### PEAK2026 USER GROUP MEETING | \$1,000

Vendor partners will also have the opportunity to host a user group meeting during the convening. Space is limited, and meeting space will be offered on a first-come, first-served basis. Sponsors will have access to a breakout room, audiovisual equipment, and their user group session will be included in the PEAK2026 program.

MARCH 25-27, 2026

#PEAK2026stl Rooted in Purpose,  
Growing Together

# Support PEAK

## Beyond the Convening

We greatly appreciate the support of our members, friends, and partners to help us host this amazing convening each year. PEAK2026 will be just one of our many efforts to bring together our community to reimagine what philanthropy can and should be—and to take practical steps to implement equitable, effective grantmaking practice change across the sector.



Consider increasing your annual membership contribution to become a Sustaining Organization Member.

Give an in-kind donation as the host for a chapter or peer group gathering

Sponsor another event in 2026, like our Volunteer Leadership Summit, Grants Management 101 virtual cohort program, or our webinar learning series.

We always welcome and accept general operating support grants.

Reach out to Sara Sanders at [sara@peakgrantmaking.org](mailto:sara@peakgrantmaking.org) for details and to explore what option is best for you and your organization

# Secure Your **Support** Package



## FEBRUARY 10, 2026

To ensure that sponsors receive maximum visibility, we are seeking supporter commitments by February 10, 2026. We will continue to offer available opportunities until secured by a partner. We hope to hear from you soon.



## REACH OUT

Please complete this [Support Commitment Form](#) or reach out to Sara Sanders with questions: [sara@peakgrantmaking.org](mailto:sara@peakgrantmaking.org)

## TESTIMONIAL

"PEAK2025 was the premier resource for networking within grants management and philanthropy. It was energizing to meet people of likeminded backgrounds and have conversation about grant process, procedure, and what the sector can do to respond to the current political moment."

**Dan Darbandi**  
Grants Administrator  
Broad Reach Foundation



# What Our Members Say



PEAK continues to show that the **ONLY** way to achieve greatness is to do it together. PEAK2025 was no exception to this and brought us all together to dialogue with, learn from, and support and uplift each other...we are much more resilient together and PEAK puts this on full display each year.

**Joe Rodriguez**  
Grants Management Associate  
Barr Foundation



PEAK has always been (and continues to be) a place to come and learn how the 'do-ers' in philanthropic organizations can drive actual societal change. I always leave inspired and ready to get to work.

**Chris Percopo**



The PEAK Grantmaking conference reinvigorates me and always provides assurance that the work we are doing truly matters. The sessions are always informative. Each year I leave the conference feeling more confident personally and professionally.

**Angela Finley Hunter**  
Grants Manager  
The Imlay Foundation